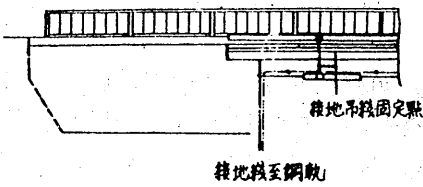
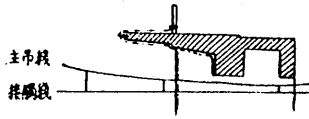


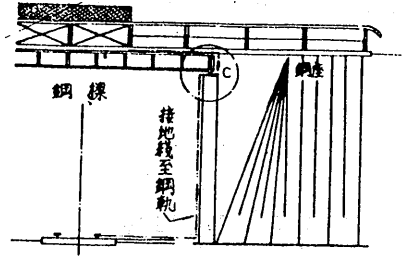
附圖五

延伸板詳圖

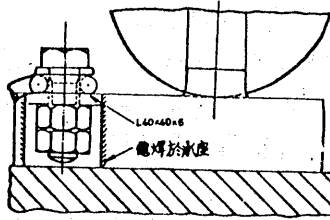


附圖六

鋼架陸橋之接地裝置



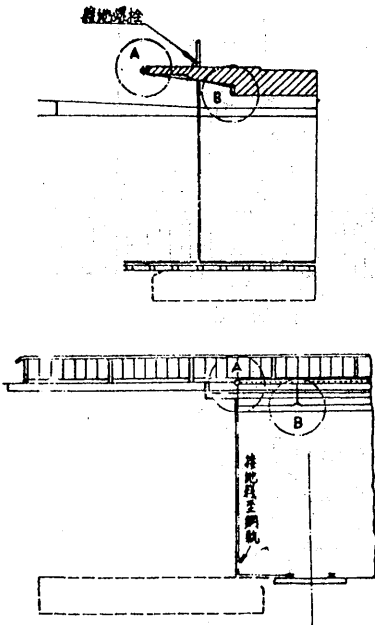
C剖面詳圖



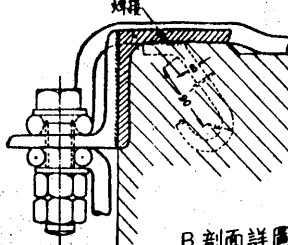
註：全部鋼件，包括螺柱及整圈螺帽均須依CNS標準施行熱浸鍍鋅。

附圖七

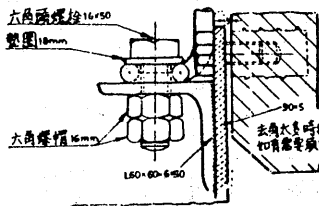
鋼筋混凝土陸橋外側延伸板之接地



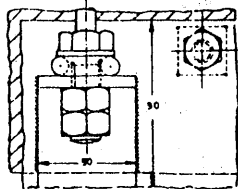
A剖面圖方法(=)



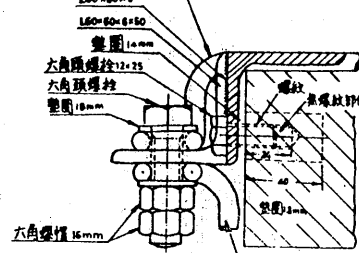
B剖面詳圖



B剖面詳圖(箭頭方向)



A剖面圖方法(-)



A剖面詳圖(方法-之箭頭方向)

