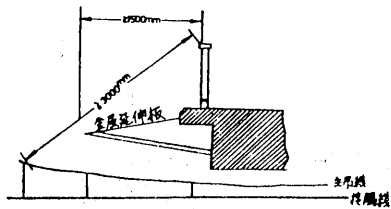
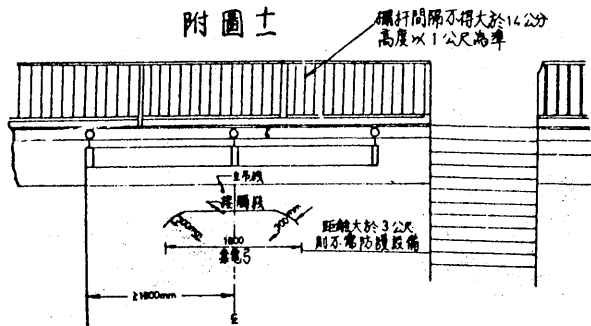


式||||

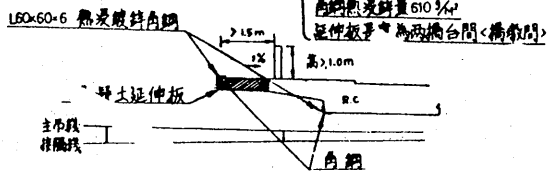
附圖十



附圖十一

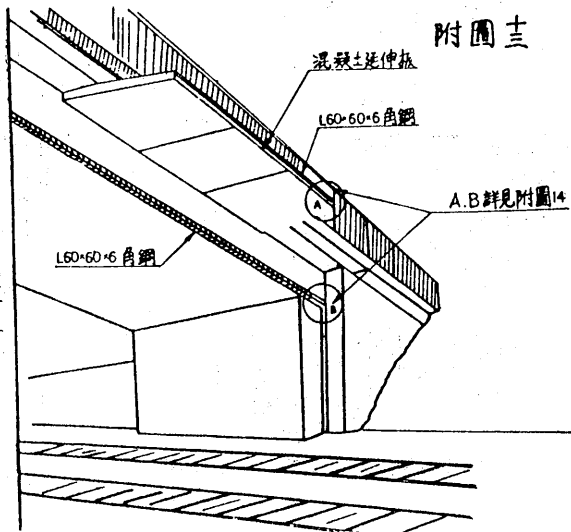


附圖十二

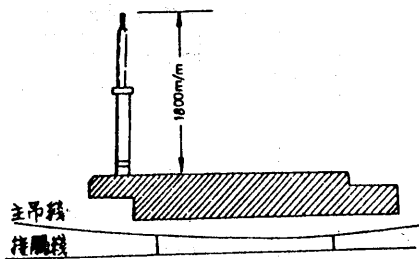


延伸板寬度100%  
延伸板排水坡度1%向橋中心  
白網熱浸鍍鋅量610%  
延伸板厚與兩橋台間橋墩間

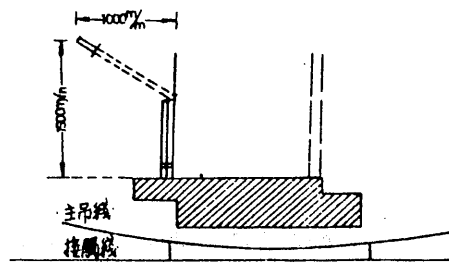
附圖十三



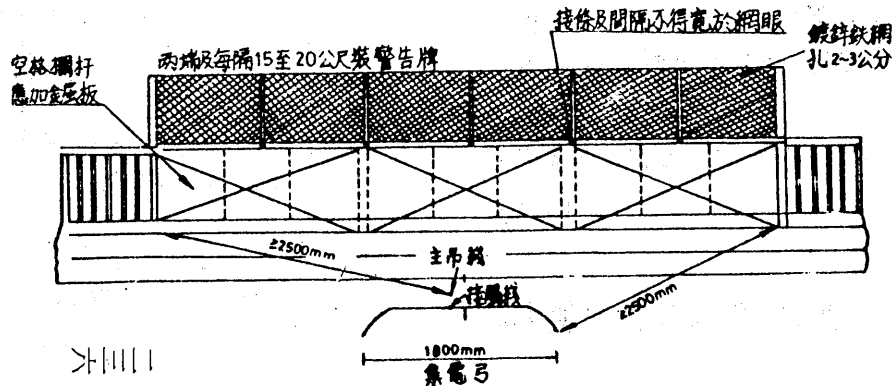
附圖七橋寬大於三公尺者



附圖八橋寬小於三公尺者



附圖九



式||||