

# Attached Graphs

Set 1 (Aspect ratio: 0.87)



<p>1-1 (Smoking Cessation Hotline: 0800636363) (Smoking causes oral cancer)</p>	<p>1-2 (Smoking Cessation Hotline: 0800636363) (Smoking causes gangrene and amputation)</p>	<p>1-3 (Smoking Cessation Hotline: 0800636363) (Smoking causes emphysema and lung cancer)</p>	<p>1-4 (Smoking Cessation Hotline: 0800636363) (Smoking causes laryngeal cancer)</p>
<p>1-5 (Smoking Cessation Hotline: 0800636363) (Smoking causes eye lesions and blindness)</p>	<p>1-6 (Smoking Cessation Hotline: 0800636363) (Smoking causes periodontitis and halitosis)</p>	<p>1-7 (Smoking Cessation Hotline: 0800636363) (Smoking causes sexual dysfunction)</p>	<p>1-8 (Smoking Cessation Hotline: 0800636363) (Second-hand smoke is poisonous to the family)</p>

Set 2 (Aspect ratio: 1)



Set 3 (Aspect ratio: 1.04)



Set 4 (Aspect ratio: 1.28)



Set 5 (Aspect ratio: 1.42)



Set 6 (Aspect ratio: 2.47)



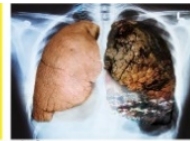
1-1

吸菸導致  
口腔癌  
戒菸專線0800636363



1-2

吸菸導致  
肢端壞死截肢  
戒菸專線0800636363



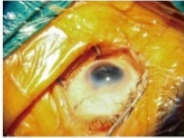
1-3

吸菸導致  
肺氣腫及肺癌  
戒菸專線0800636363



1-4

吸菸導致  
喉癌  
戒菸專線0800636363



1-5

吸菸導致  
眼睛病變及失明  
戒菸專線0800636363



1-6

吸菸導致  
牙周炎及口臭  
戒菸專線0800636363



1-7

吸菸會造成  
性功能障礙  
戒菸專線0800636363



1-8

二手菸  
毒害全家人  
戒菸專線0800636363